

# SPO 70 cm Series 5 dBi

## Sirio Professional Omni

### UHF Base Station Antennas 350-510 MHz

**DESCRIPTION:** Series of **wide band** omnidirectional base station antennas for UHF band working from 350 MHz to 510 MHz. The fiberglass protection radome and the anodized aluminium parts guarantee robustness and long life to all the SPO-antennas series. They are supplied with two strong extruded aluminium brackets and stainless steel hardware for a good installation on the mast.

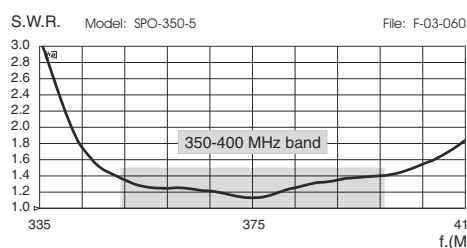
Electrical Data	SPO 350-5	SPO 380-5	SPO 420-5	SPO 450-5
Type	Colinear			
Frequency Range	350 - 400 MHz @ SWR ≤ 1.5	380 - 430 MHz @ SWR ≤ 1.5	420 - 470 MHz @ SWR ≤ 1.5	450 - 510 MHz @ SWR ≤ 1.5
Impedance	50 Ω			
Radiation (H-plane)	360° Omnidirectional - HCM code = 000ND00			
Radiation (E-plane)	Beamwidth @ -3dB = 40° - HCM code = 020ND15			
Radiation angle deg.	0°			
Polarization	Linear Vertical			
Gain	3 dBd - 5.15 dBi			
Max Power	75 Watts (CW) @ 30°C ambient			
Grounding Protection	All metal parts are DC-grounded, inner conductor shows a DC short			
Connector	N-female, with rubber protection cap			

#### Mechanical Data

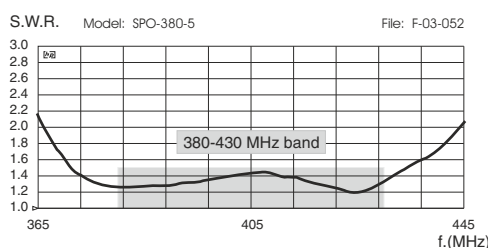
Materials	White fiberglass radome Ø 28.6 mm, anodized 6063-T5 aluminium, brass, stainless steel, copper, EPDM rubber.			
Wind Load at 150 km/h	53 N	52 N	49 N	41 N
Wind Resistance	180Km/h; 112mi/h	180Km/h; 112mi/h	200Km/h; 124mi/h	200Km/h; 124mi/h
Wind Surface	0.044m²; 0.47ft²	0.043m²; 0.46ft²	0.04m²; 0.43ft²	0.034m²; 0.36ft²
Operating temperature	-40°C to + 80°C			
Height (approx.)	1380mm; 4.5ft	1330mm; 4.3ft	1230mm; 4.0ft	1070mm; 3.5 ft
Weight (approx.)	1240 gr; 2.7 lb	1200 gr; 2.6 lb	1160 gr; 2.5 lb	1090 gr; 2.4 lb
Ingress Protection	IP 67			
Mounting Mast	Side mast with "V" bolt, Ø 35-60 mm, Ø 1.4-2.4 in			



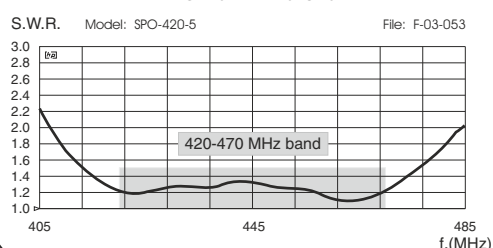
TYPICAL S.W.R. RESPONSE



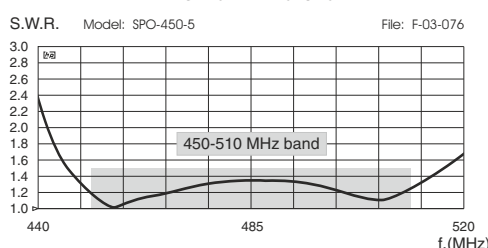
TYPICAL S.W.R. RESPONSE



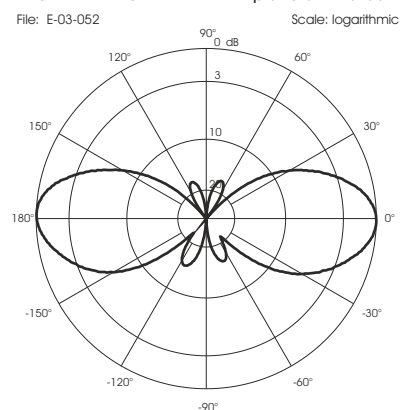
TYPICAL S.W.R. RESPONSE



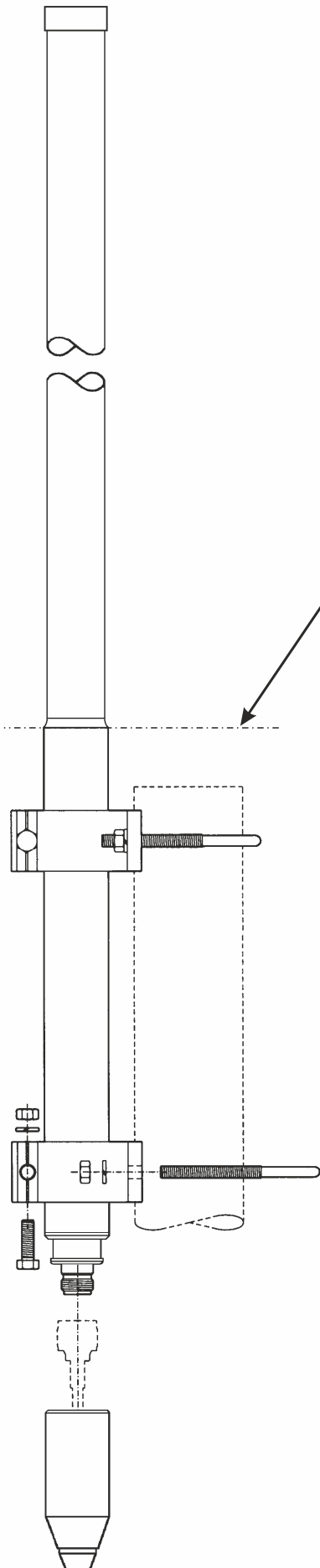
TYPICAL S.W.R. RESPONSE



TYPICAL RADIATION PATTERN in E-plane at mid-band



## MOUNTING INSTRUCTIONS



**ATTENTION!**  
The mounting mast  
does not have to be  
higher of the  
aluminium tube

### FT-5 fixing bracket:

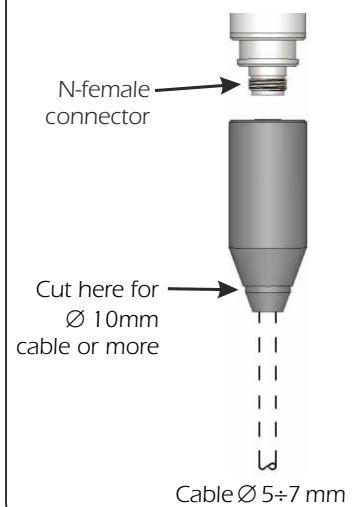


#### FT-5 fixing bracket part list

Q.ty	Description
2	Extruded aluminium bracket
2	M6x206 V-bolt
2	M6x20 Exagonal head screw
6	M6 Spring lock washer
6	M6 Hexagonal nut
Materials:	extruded aluminum
Hardware:	stainless steel
Dimensions :	85 x 65 x 25 mm
Weight:	220 g
<b>Re-order code: 2519613.00</b>	

### Connector protection cap

Re-order code: TE06416



HI-QUALITY ANTENNAS MADE IN ITALY

